

2012 RENEGADE X[®]



PACKAGE HIGHLIGHTS

- REV-XR™ platform
- SC™5 rear suspension
- KYB Pro 36 aluminum piggyback rear shock with high/low speed compression adjusters
- **NEW** Track choices
- Lightweight chromoly front suspension lower A-arm
- HPG™ Plus R aluminum front shocks with no-tool rebound adjuster
- Brembo racing brake with stainless-steel braided brake line
- **NEW** REV-XP X seat with 1.3 gal (5 l) of storage
- Electric start
- Mechanical reverse
- Electric fuel gauge
- 250-mm / 10-inch windshield
- **NEW** 130 mm / 5.1 in riser block
- Hand wind deflectors
- Painted tunnel
- Extended heat exchanger for better cooling capacity

ENGINE CHOICE

Engine	Rotax® 4-TEC® 1200
Engine details	Liquid-cooled, four-stroke D.O.H.C., dry sump
Cylinders	3
Displacement	1170.7 cc / 71.4 in ³
Bore	91 mm / 3.6 in
Stroke	60 mm / 2.4 in
Maximum engine speed	7800 RPM
Carburation	EFI
Recommended fuel type	Regular unleaded
Minimum octane	87
Fuel tank	40 liters / 10.6 gallons
Oil tank capacity	3.5 liters / 3.7 quarts
Exhaust system	Single head-pipe, baffle muffler

POWERTRAIN

Drive clutch type	TRA™ IV
Driven clutch type	QRS
Engagement	2500 RPM
Small sprocket number of teeth	24
Large sprocket number of teeth	45
Drive sprocket number of teeth	8
Drive sprocket diameter	183 mm / 7.2 in
Brake system	Brembo racing brake with stainless-steel braided brake line

DRY WEIGHT

235 kg / 519 lb

FEATURES

Frame	REV-XR	Reverse	Mechanical	Temperature gauge	Optional
Skis	Pilot™ 5.7	Heated throttle lever	Standard	Mirrors	Optional
Seating	REV-XP X with storage	Heated grips	Standard	Windshield	250 mm / 10 in
Handlebar	Aluminum with J-hooks	Speedometer	Standard	Carbide runner	Standard
Riser block height	130 mm / 5.1 in	Tachometer	Standard	Hitch	Optional
Electric start	Standard	Fuel gauge	Standard		

COLOR CHOICE

Black / White
Black

DIMENSIONS

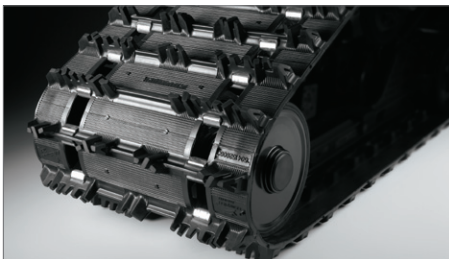
Vehicle overall length	3110 mm / 122.4 in
Vehicle overall width	1217 mm / 47.9 in
Vehicle overall height	1130 mm / 44.5 in
Ski stance	1077 mm / 42.4 in
Ski overall length	1066 mm / 42 in
Ski width	145 mm / 5.7 in
Track nominal width	406 mm / 16 in 381 mm / 15 in (Ice Ripper XT)
Track nominal length	3487 mm / 137 in
Track profile height	31.8 mm / 1.25 in (with choices)
Track choices	RipSaw [†] Ice Ripper XT

SUSPENSION

Front suspension	Dual A-arms
Front shock	HPG Plus R
Front suspension max. travel	229 mm / 9 in
Rear suspension	SC-5
Center shock	HPG Plus
Rear shock	KYB Pro 36
Rear suspension max. travel	406 mm / 16 in

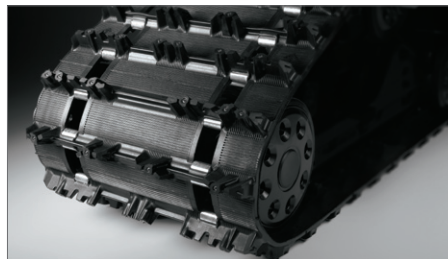


2012 RENEGADE X[®]



RipSaw Track

Excellent traction in all conditions, lightweight. Wide for added traction, flotation.



NEW Ice Ripper XT Track (opt)

Comes with lug-embedded carbide studs for added grip in icy conditions.



NEW Seat+ Storage

1.3 gal (5 l) of storage easily holds all the items needed for even the longest rides.