

# 2012 MXZ X



## ENGINE CHOICE

Engine	Rotax® E-TEC® 800R	Rotax E-TEC 600 H.O.
Engine details	Liquid-cooled, 3-D R.A.V.E.™	Liquid-cooled, 3-D R.A.V.E.
Cylinders	2	2
Displacement	799.5 cc / 48.8 in <sup>3</sup>	594.4 cc / 36.3 in <sup>3</sup>
Bore	82 mm / 3.2 in	72 mm / 2.8 in
Stroke	75.7 mm / 3 in	73 mm / 2.9 in
Maximum engine speed	8000 RPM	8100 RPM
Carburation	Electronic Direct Injection	Electronic Direct Injection
Recommended fuel type	Premium unleaded	Premium unleaded
Minimum octane	91	91
Fuel tank	40 liters / 10.6 gallons	40 liters / 10.6 gallons
Oil tank capacity	3.7 liters / 3.9 quarts	3.7 liters / 3.9 quarts
Exhaust system	Single tuned-pipe, baffle muffler	Single tuned-pipe, baffle muffler

## POWERTRAIN

Drive clutch type	TRA™ VII	TRA III
Driven clutch type	QRS	QRS
Engagement	3800 RPM	3400 RPM
Small sprocket number of teeth	27	25
Large sprocket number of teeth	45	45
Drive sprocket number of teeth	8	8
Drive sprocket diameter	183 mm / 7.2 in	183 mm / 7.2 in
Brake system	Brembo racing brake with stainless-steel braided brake line	Brembo racing brake with stainless-steel braided brake line

## DRY WEIGHT

199 kg / 438 lb (with RipSaw <sup>†</sup> track)	195 kg / 429 lb (with RipSaw track)
---	--

## FEATURES

Frame	REV-XP	Reverse	RER	Temperature gauge	Optional
Skis	Pilot™ 5.7	Heated throttle lever	Standard	Mirrors	Optional
Seating	REV-XP X with storage	Heated grips	Standard	Windshield	285 mm / 12 in with deflectors
Handlebar	Straight aluminum with J-hooks	Speedometer	Standard	Carbide runner	Standard
Riser block height	130 mm / 5.1 in	Tachometer	Standard	Hitch	Optional
Electric start	Standard	Fuel gauge	Standard		

## PACKAGE HIGHLIGHTS

- REV-XP™ platform
- **NEW** rMotion rear suspension
- KYB Pro 36 aluminum piggyback rear shock with Easy-Adjust compression adjusters
- **NEW** Track choices
- Lightweight chromoly front suspension lower A-arm
- HPG™ Plus R aluminum front shocks with no-tool rebound adjuster
- Brembo racing brake with stainless-steel braided brake line
- **NEW** REV-XP X seat with 1.3 gal (5 l) of storage
- 285-mm / 12-inch windshield with integrated wind deflectors
- **NEW** Electric start
- RER™ electronic reverse
- Electric fuel gauge
- **NEW** Wrap kit choices (decals)\*
- Painted tunnel
- Hand wind deflectors
- **NEW** 130-mm / 5.1-inch riser block

## EXTRA HIGHLIGHT E-TEC 800R

- Dual air intakes

## COLOR CHOICES

Deep Black  
Black / White

## DIMENSIONS

Vehicle overall length	2905 mm / 114.4 in
Vehicle overall width	1217 mm / 47.9 in
Vehicle overall height	1130 mm / 44.5 in
Ski stance	1077 mm / 42.4 in
Ski overall length	1066 mm / 42 in
Ski width	145 mm / 5.7 in
Track nominal width	381 mm / 15 in
Track nominal length	3051 mm / 120 in
Track profile height	31.8 mm / 1.25 in (with choices)
Track choices	RipSaw Ice Ripper XT

## SUSPENSION

Front suspension	Dual A-arms
Front shock	HPG Plus R
Front suspension max. travel	229 mm / 9 in
Rear suspension	rMotion
Suspension adjustment	rMotion Quick Adjust System (Optional)
Center shock	HPG Plus
Rear shock	KYB Pro 36 Easy-Adjust
Rear suspension max. travel	394 mm / 15.5 in



# 2012 MX Z X



## WRAP OPTIONS\*

Take the promotion offer and customize your sleds with the look you want.



Drop Zone



ID

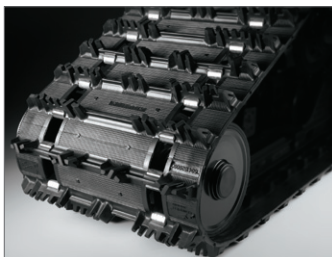


Tag Yellow



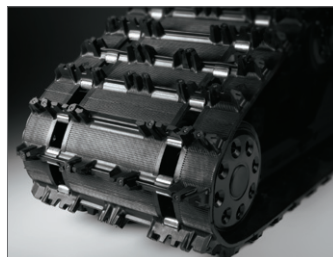
### NEW rMotion Rear Suspension\* (with opt adjuster)

Sets new standard in comfort, capability and adjustability. It offers most travel, so it smoothes out small bumps while maintaining capacity for big jumps.



### RipSaw Track

Excellent traction in all conditions, lightweight.



### NEW Ice Ripper XT Track (opt)

Comes with lug-embedded carbide studs for added grip in icy conditions.



### NEW Seat Storage

1.3 gal (5 l) of storage easily holds all the items needed for even the longest rides.

\*Wrap kit available for REV-XP Spring-Exclusive models as a Spring promotion choice. \*MX Z X-RS coloration shown.