

2012 MX Z[®] SPORT



PACKAGE HIGHLIGHTS

- REV-XP™ platform
- SC™-5 rear suspension
- **NEW** Lightweight 1.25-inch lug RipSaw[®] track
- Motion Control shocks
- Pilot™ 5.7 skis
- Brembo hydraulic brake
- RER™ electronic reverse
- Analog gauge with display
- Electric fuel gauge
- Straight steel handlebar with integrated J-hooks
- 375-mm / 15-inch windshield with integrated hand wind deflectors

EXTRA HIGHLIGHTS ACE 600

- Rotax® ACE 600 engine with 420W magneto
- Brembo racing brake with stainless-steel braided brake line
- **NEW** Engine oil cooler
- Extended heat exchanger for better cooling capacity
- Lightweight 1-inch lug RipSaw track

ENGINE CHOICE

Engine	Rotax® ACE 600	Rotax 600	Rotax 550F
Engine details	Liquid-cooled, four-stroke D.O.H.C., dry sump	Liquid-cooled, R.A.V.E.™	Axial fan-cooled, cylinder reed porting
Cylinders	2	2	2
Displacement	600 cc / 36.6 in ³	597 cc / 36.4 in ³	553.4 cc / 33.8 in ³
Bore	74 mm / 2.9 in	76 mm / 3 in	76 mm / 3 in
Stroke	69.7 mm / 2.7 in	65.8 mm / 2.6 in	61 mm / 2.4 in
Maximum engine speed	7250 RPM	8100 RPM	6800 RPM
Carburation	EFI, 42 mm throttle body	2X TM-40	2X VM-30
Recommended fuel type	Regular unleaded	Regular unleaded	Regular unleaded
Minimum octane	87	87	87
Fuel tank	40 liters / 10.6 gallons	40 liters / 10.6 gallons	40 liters / 10.6 gallons
Oil tank capacity	2.1 liters / 2.2 quarts	3.7 liters / 3.9 quarts	3.7 liters / 3.9 quarts
Exhaust system	Double head-pipe, baffle muffler	Single tuned-pipe, baffle muffler	Single tuned-pipe, baffle muffler

POWERTRAIN

Drive clutch type	eDrive™	TRA™ III	eDrive
Driven clutch type	QRS (short shaft)	QRS	QRS (short shaft)
Engagement	2200 RPM	3800 RPM	2600 RPM
Small sprocket number of teeth	24	25	21
Large sprocket number of teeth	51	45	45
Drive sprocket number of teeth	8	8	8
Drive sprocket diameter	183 mm / 7.2 in	183 mm / 7.2 in	183 mm / 7.2 in
Brake system	Brembo racing brake with stainless-steel braided brake line	Brembo hydraulic disc	Brembo hydraulic disc

DRY WEIGHT

206 kg / 454 lb	191 kg / 420 lb	192 kg / 423 lb
-----------------	-----------------	-----------------

FEATURES

Frame	REV-XP	Reverse	Mechanical (ACE 600)	Temperature gauge	Optional
Skis	Pilot 5.7	Heated throttle lever	RER	Mirrors	Optional
Seating	REV-XP	Heated grips	Standard	Windshield	375 mm / 15 in
Handlebar	Straight steel with J-hooks	Speedometer	Standard	Carbide runner	Standard
Riser block height	115 mm / 4.5 in	Tachometer	Standard	Hitch	Optional
Electric start	Standard (ACE 600) Optional	Fuel gauge	Standard		

COLOR CHOICE

Yellow / Black

DIMENSIONS

Vehicle overall length	2905 mm / 114.4 in
Vehicle overall width	1217 mm / 47.9 in
Vehicle overall height	1210 mm / 47.6 in
Ski stance	1077 mm / 42.4 in
Ski overall length	1066 mm / 42 in
Ski width	145 mm / 5.7 in
Track nominal width	381 mm / 15 in
Track nominal length	3051 mm / 120 in
Track profile height	25.4 mm / 1 in RipSaw (ACE 600) 31.8 mm / 1.25 in RipSaw

SUSPENSION

Front suspension	Dual A-arms
Front shock	Motion Control
Front suspension max. travel	229 mm / 9 in
Rear suspension	SC-5
Center shock	Motion Control
Rear shock	Motion Control
Rear suspension max. travel	381 mm / 15 in



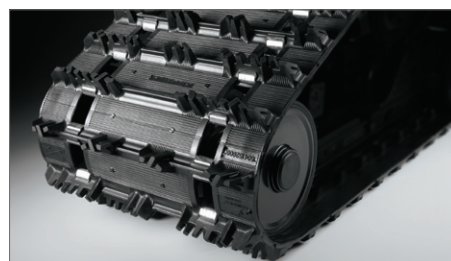
2012 MX Z[®] SPORT



Motion Control Shocks
High-quality, high value gas cell shocks.



Pilot 5.7 Skis
Dual-keel, single runner design for aggressive bites in corners and virtually no darting from the skis.



NEW RipSaw Track 1.25"
Excellent traction in all conditions.