

2012 MX Z TNT™



PACKAGE HIGHLIGHTS

- REV-XR™ platform
- SC™5 rear suspension
- **NEW** Lightweight 1.25-inch lug RipSaw⁺ track
- HPG™ Plus aluminum shocks
- Pilot™ 5.7 skis
- Mechanical reverse
- **NEW** Painted tunnel
- Analog gauge with display
- Electric fuel gauge
- Straight aluminum handlebar with integrated J-hooks
- 375-mm / 15-inch windshield
- Brembo racing brake with stainless-steel braided brake line
- Extended heat exchanger for better cooling capacity

ENGINE CHOICE

Engine	Rotax® 4-TEC® 1200
Engine details	Liquid-cooled, four-stroke D.O.H.C., dry sump
Cylinders	3
Displacement	1170.7 cc / 71.4 in ³
Bore	91 mm / 3.6 in
Stroke	60 mm / 2.4 in
Maximum engine speed	7800 RPM
Carburation	EFI
Recommended fuel type	Regular unleaded
Minimum octane	87
Fuel tank	40 liters / 10.6 gallons
Oil tank capacity	3.5 liters / 3.7 quarts
Exhaust system	Single head-pipe, baffle muffler

POWERTRAIN

Drive clutch type	TRA™ IV
Driven clutch type	QRS
Engagement	2500 RPM
Small sprocket number of teeth	24
Large sprocket number of teeth	43
Drive sprocket number of teeth	8
Drive sprocket diameter	183 mm / 7.2 in
Brake system	Brembo racing brake with stainless-steel braided brake line

DRY WEIGHT

226 kg / 499 lb

FEATURES

Frame	REV-XR	Reverse	Mechanical	Temperature gauge	Optional
Skis	Pilot 5.7	Heated throttle lever	Standard	Mirrors	Optional
Seating	REV-XP	Heated grips	Standard	Windshield	375 mm / 15 in
Handlebar	Straight aluminum with J-hooks	Speedometer	Standard	Carbide runner	Standard
Riser block height	115 mm / 4.5 in	Tachometer	Standard	Hitch	Optional
Electric start	Standard	Fuel gauge	Standard		

COLOR CHOICE

Yellow / Black

DIMENSIONS

Vehicle overall length	2905 mm / 114.4 in
Vehicle overall width	1217 mm / 47.9 in
Vehicle overall height	1210 mm / 47.6 in
Ski stance	1077 mm / 42.4 in
Ski overall length	1066 mm / 42 in
Ski width	145 mm / 5.7 in
Track nominal width	381 mm / 15 in
Track nominal length	3051 mm / 120 in
Track profile height	31.8 mm / 1.25 in RipSaw

SUSPENSION

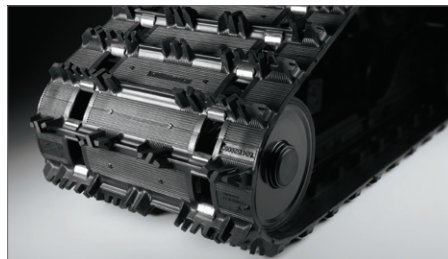
Front suspension	Dual A-arms
Front shock	HPG Plus
Front suspension max. travel	229 mm / 9 in
Rear suspension	SC-5
Center shock	HPG Plus
Rear shock	HPG Plus
Rear suspension max. travel	381 mm / 15 in

2012 MX Z TNT™



Painted Tunnel

Provides a sleeker and more unified look.



NEW RipSaw Track 1.25"

Excellent traction in all conditions.



Front Shock

High-quality KYB aluminum HPG Plus high-pressure gas shocks.