

2012 GRAND TOURING SPORT



600 shown.

PACKAGE HIGHLIGHTS

- REV-XP™ platform
- Dual A-arm front suspension
- Pilot™ 5.7 SL skis
- Analog gauge with display
- Electric start
- RER™ electronic reverse
- Heated driver's visor power outlet
- Excellent wind protection with a 18-inch windshield
- Lightweight 16 x 137 1.25-inch lug RipSaw⁺ track
- Mirrors
- Removable 2-up seat (needs tools)
- Cargo rack
- Brembo hydraulic brake

EXTRA HIGHLIGHTS ACE 600

- Rotax® ACE 600 engine with 650W magneto
 - **NEW** Lightweight 15 x 137 1-inch lug SilenTrack⁺ track
 - Heated passenger grips with air deflectors
 - Air radiator with fan
 - Engine oil cooler
 - **NEW** Brembo brake with stainless-steel braided brake line
 - Extended heat exchanger for better cooling capacity
- ### 600
- Heated passenger grips with air deflectors
 - Driver knee wind deflectors

ENGINE CHOICE

Engine	Rotax® ACE 600	Rotax 600	Rotax 550F
Engine details	Liquid-cooled, four-stroke D.O.H.C., dry sump	Liquid-cooled, R.A.V.E.™	Axial fan-cooled, cylinder reed porting
Cylinders	2	2	2
Displacement	600 cc / 36.6 in ³	597 cc / 36.4 in ³	553.4 cc / 33.8 in ³
Bore	74 mm / 2.9 in	76 mm / 3 in	76 mm / 3 in
Stroke	69.7 mm / 2.7 in	65.8 mm / 2.6 in	61 mm / 2.4 in
Maximum engine speed	7250 RPM	8100 RPM	6800 RPM
Carburation	EFI	2X TM-40	2X VM-30
Recommended fuel type	Regular unleaded	Regular unleaded	Regular unleaded
Minimum octane	87	87	87
Fuel tank	40 liters / 10.6 gallons	40 liters / 10.6 gallons	40 liters / 10.6 gallons
Oil tank capacity	2.1 liters / 2.2 quarts	3.7 liters / 3.9 quarts	3.7 liters / 3.9 quarts
Exhaust system	Double head-pipe, baffle muffler	Single tuned-pipe, baffle muffler	Single tuned-pipe, baffle muffler

POWERTRAIN

Drive clutch type	eDrive™	TRA™ III	eDrive
Driven clutch type	QRS (short shaft)	QRS	QRS (short shaft)
Engagement	2200 RPM	3400 RPM	2600 RPM
Small sprocket number of teeth	21	23	19
Large sprocket number of teeth	49	45	45
Drive sprocket number of teeth	8	8	8
Drive sprocket diameter	183 mm / 7.2 in	183 mm / 7.2 in	183 mm / 7.2 in
Brake system	Brembo brake with stainless-steel braided brake line	Brembo hydraulic brake	Brembo hydraulic brake

DRY WEIGHT

234 kg / 515 lb	229 kg / 504 lb	225 kg / 495 lb
-----------------	-----------------	-----------------

FEATURES

Frame	REV-XP	Reverse	Mechanical (ACE 600)	Temperature gauge	Optional
Skis	Pilot 5.7 SL		RER		N/A (550F)
Seating	2-up	Heated throttle lever	Standard	Mirrors	Standard
Backrest	Standard (not adjustable)	Heated grips	Standard	Windshield	450 mm / 18 in
Handlebar	Straight steel w/ J-Hooks	Speedometer	Standard	Carbide runner	Standard
Riser block height	115 mm / 4.5 in	Tachometer	Standard	Hitch	Optional
Electric start	Standard	Fuel gauge	Standard		

COLOR CHOICE

Deep Black

DIMENSIONS

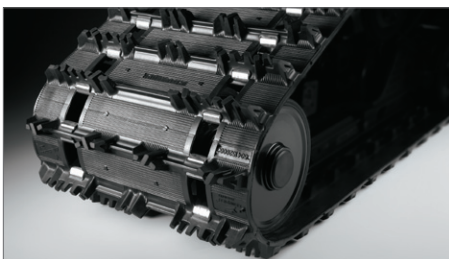
Vehicle overall length	3110 mm / 122.4 in
Vehicle overall width	1217 mm / 47.9 in
Vehicle overall height	1275 mm / 50.2 in
Ski stance	1077 mm / 42.4 in
Ski overall length	1066 mm / 42 in
Ski width	145 mm / 5.7 in
Track nominal width	381 mm / 15 in (ACE 600)
	405 mm / 16 in
Track nominal length	3486 mm / 137 in
Track profile height	25.4 mm / 1 in RipSaw ⁺ SilenTrack (ACE 600)
	31.8 mm / 1.25 in RipSaw

SUSPENSION

Front suspension	Dual A-arms
Front shock	Motion Control
Front suspension max. travel	229 mm / 9 in
Rear suspension	SC-5M
Center shock	Motion Control
Rear shock	HPG
Rear suspension max. travel	340 mm / 13.4 in



2012 GRAND TOURING SPORT



RipSaw Track*

Track configuration ideally matched to engine capabilities for excellent traction in all conditions; lightweight.



Passenger Seat**

Passenger hand wind deflectors with controlable heated grips.



18" Windshield

18-inch tall (450 mm) windshield offers unmatched wind protection.

*600 and 550F only.

**ACE 600 and 600 only.