

2012 GSX SE



PACKAGE HIGHLIGHTS

- REV-XR™ platform
- SC™-5 rear suspension
- Air Control Suspension (ACS)
- **NEW** Lightweight 15 x 137 1.25-inch lug RipSaw⁺ track
- Pilot™ 5.7 skis
- **NEW** Brembo brake with stainless-steel braided brake line
- Tilt steering with 4 positions
- RER electronic reverse
- Multi-function digital gauge with display with temperature gauge
- 12V power outlet
- Heated visor power outlet
- Heated seat
- Mirrors
- **NEW** GSX expandable tunnel bag
- Electric start
- Painted tunnel

EXTRA HIGHLIGHTS

4-TEC 1200

- Electronic push-button reverse
- Air radiator with fan
- Extended heat exchanger for better cooling capacity

ENGINE CHOICE

Engine	Rotax® 4-TEC® 1200	Rotax E-TEC 800R	Rotax E-TEC 600 H.O.
Engine details	Liquid-cooled, four-stroke D.O.H.C., dry sump	Liquid-cooled, 3-D R.A.V.E.™	Liquid-cooled, 3-D R.A.V.E.™
Cylinders	3	2	2
Displacement	1170.7 cc / 71.4 in ³	799.5 cc / 48.8 in ³	594.4 cc / 36.3 in ³
Bore	91 mm / 3.6 in	82 mm / 3.2 in	72 mm / 2.8 in
Stroke	60 mm / 2.4 in	75.7 mm / 3 in	73 mm / 2.9 in
Maximum engine speed	7800 RPM	8000 RPM	8100 RPM
Carburation	EFI	Electronic Direct Injection	Electronic Direct Injection
Recommended fuel type	Regular unleaded	Premium unleaded	Premium unleaded
Minimum octane	87	91	91
Fuel tank	40 liters / 10.6 gallons	40 liters / 10.6 gallons	40 liters / 10.6 gallons
Oil tank capacity	3.5 liters / 3.7 quarts	3.7 liters / 3.9 quarts	3.7 liters / 3.9 quarts
Exhaust system	Single head-pipe, baffle muffler	Single tuned-pipe, baffle muffler	Single tuned-pipe, baffle muffler

POWERTRAIN

Drive clutch type	TRA™ IV	TRA VII	TRA III
Driven clutch type	QRS	QRS	QRS
Engagement	2500 RPM	3800 RPM	3400 RPM
Small sprocket number of teeth	24	25	23
Large sprocket number of teeth	45	45	45
Drive sprocket number of teeth	8	8	8
Drive sprocket diameter	183 mm / 7.2 in	183 mm / 7.2 in	183 mm / 7.2 in
Brake system	Brembo brake with stainless-steel braided brake line	Brembo brake with stainless-steel braided brake line	Brembo brake with stainless-steel braided brake line

DRY WEIGHT

249 kg / 549 lb	219 kg / 483 lb	213 kg / 469 lb
-----------------	-----------------	-----------------

FEATURES

Frame	REV-XR	Reverse	Electronic (4-TEC® 1200 only)	Temperature gauge	Standard
Skis	Pilot 5.7		RER	Mirrors	Standard
Seating	REV-XP	Heated throttle lever	Standard	Windshield	410 mm / 16 in
Handlebar	Bent painted steel / Tilt steering / Steering cover	Heated grips	Standard	Carbide runner	Standard
Riser block height	115 mm / 4.5 in	Speedometer	Standard	Hitch	Optional
Electric start	Standard	Tachometer	Standard		
		Fuel gauge	Standard		

COLOR CHOICES

Regal Red
Deep Black

DIMENSIONS

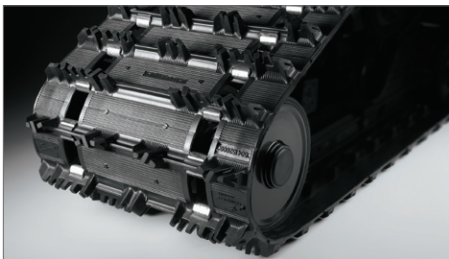
Vehicle overall length	3110 mm / 122.4 in
Vehicle overall width	1217 mm / 47.9 in
Vehicle overall height	1338 mm / 52.7 in
Ski stance	1077 mm / 42.4 in
Ski overall length	1066 mm / 42 in
Ski width	145 mm / 5.7 in
Track nominal width	381 mm / 15 in
Track nominal length	3487 mm / 137 in
Track profile height	31.8 mm / 1.25 in

SUSPENSION

Front suspension	Dual A-arms
Front shock	HPG
Front suspension max. travel	229 mm / 9 in
Rear suspension	SC-5
Center shock	HPG
Rear shock	ACS (air spring)
Rear suspension max. travel	406 mm / 16 in



2012 GSX SE



RipSaw Track
NEW Lightweight track with 1.25" lug provides extreme traction for supreme trail grip.



ACS Rear Suspension
Customize the ride on the fly with a rocker switch on the handlebars that changes the preload level of the rear shock, for added comfort in varying trail conditions.



16" Windshield
A higher windshield designed for outstanding wind protection.